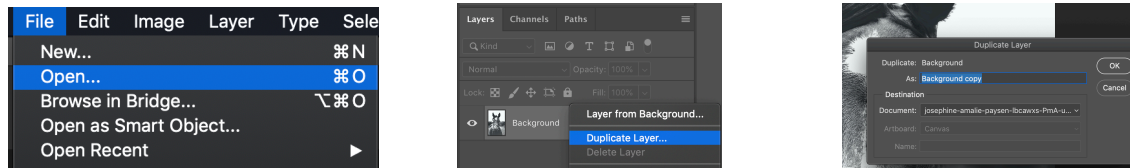


Pop Art Portrait

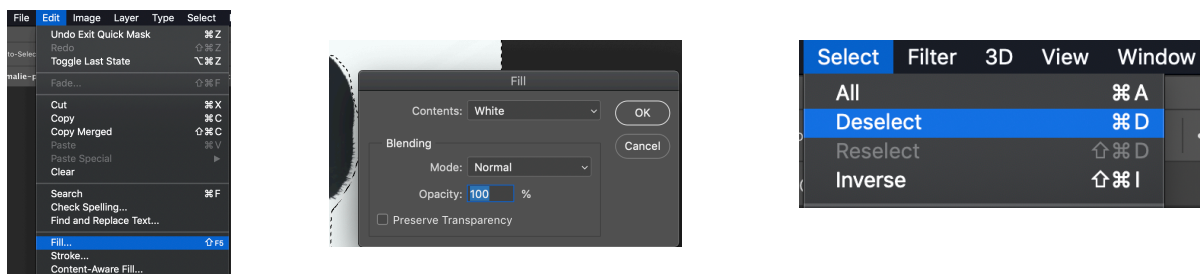
Find a black and white portrait. Open it in Photoshop. Right click on the Background Layer in the Layers panel and **Duplicate Layer**. When Duplicate Layer window opens, click OK.



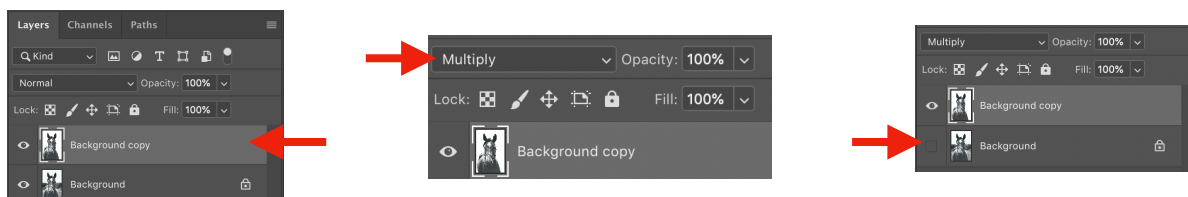
With Background copy layer selected in Layers panel, apply a **Quick Mask** (near bottom of tools panel on lower left of screen). Then, select the **Pencil tool** and paint along the edges of your portrait. Then select the **Paint Bucket tool** and click on the inside of your outline.



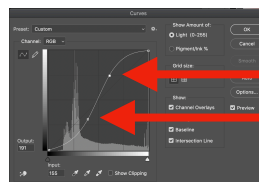
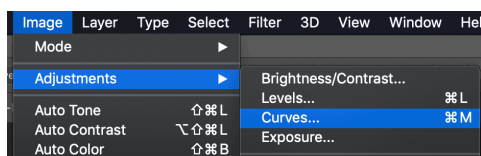
With your portrait in red, Click **Q** on your keyboard to make a selection. Then go to **Edit > Fill > White** and click OK. Then go to **Select > Deselect**.



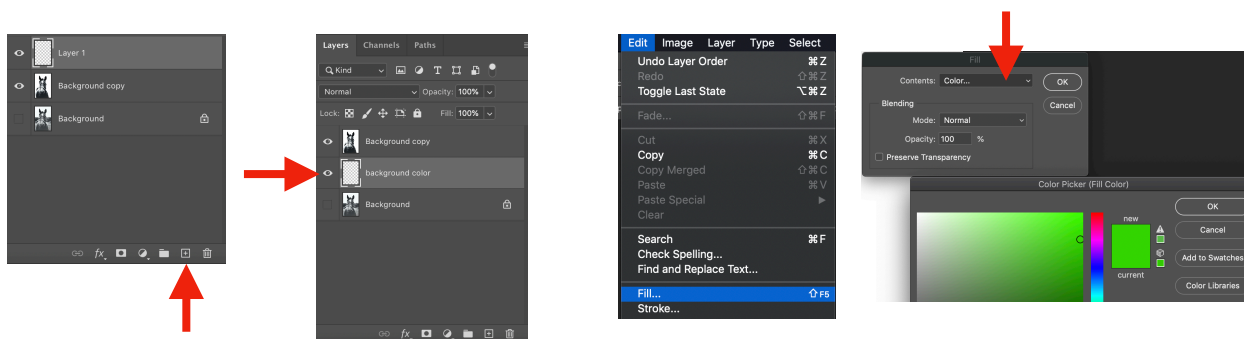
With 'Background copy' layer selected, change to **Multiply**. Click on eye to hide background layer.



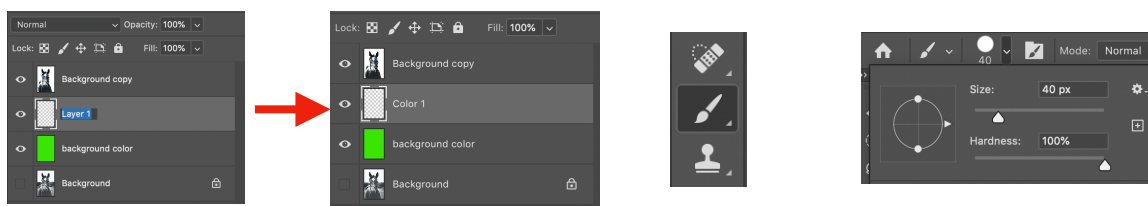
Now, add more contrast to your portrait. Go to **Image > Adjustments > Curves**. When the curves window opens, add two points along the line, by clicking one at a time and creating an S-like curve. When you have a strong contrast, click OK.



In the Layers panel, create a new layer. Double-click on it and rename it *Background color*, and move it between Background and Background copy layers. Go to **Edit > Fill** and change **Contents: Color...** select a background color and click OK.



In the Layers panel, create a new layer. Double-click on it and rename it *Color 1*. Select the **Brush tool** in the tools panel and change the **Hardness** to 100%.



Change the **Foreground Color** to the color you want to paint with. Click OK and start painting.

